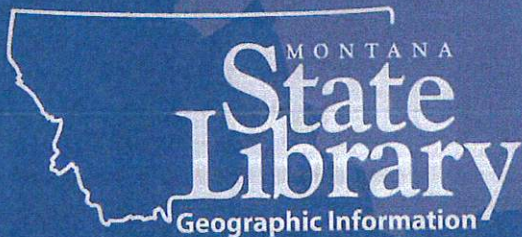




MONTANA
**State
Library**

**Montana State
Library
Geographic
Information**



*Montana's source for
geographic information*

MSL Geographic Information Service Goals

Serve as Montana's source for

geographic information
MSL accomplishes this through the inventory, acquisition, storage, and dissemination of geographic information.

Management of the Montana Spatial Data Infrastructure (MSDI)

MSL staff and partners serve as stewards and technical leads for 15 MSDI Framework Layers. These are statewide datasets that are consistently developed and maintained as a foundation for GIS applications and analysis in the state.

Boundaries
Hydrologic Units
Cadastral
Imagery
Landcover
Climate
Elevation
Geodetic control
Geographic Names
Geology
Hydrography

Facilitate agency data coordination
To effectively operate and provide accurate data, MSL promotes interagency coordination, sharing of information, and the development of data standards.

Provide user support and tools
MSL helps patrons make the best use of geographic information by providing technical assistance and developing information discovery, access, analysis, and interpretation tools.

Montana GIS Portal

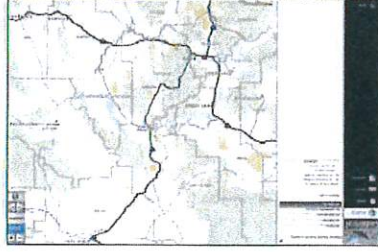
Discover Montana GIS data.
<http://gisportal.msl.mt.gov/>



Cadastral

Research land ownership.

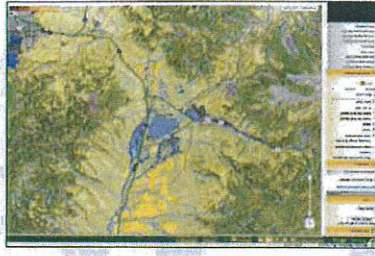
<http://gis.mt.gov/>



Natural Heritage Map Viewer

Interactive map based reports for land cover, land management, and species of concern.

<http://mtnhp.org/mapviewer/>



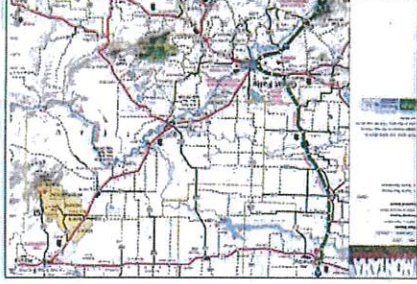
Companion Tools

Learn about Montana hunting, fishing and place names.

<http://www.msl.mt.gov/hunting/>



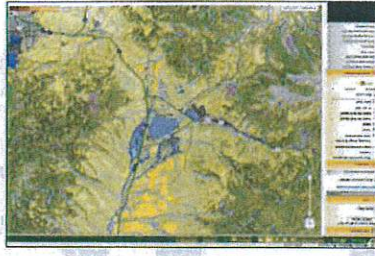
<http://mtplacenames.org/>



Natural Heritage Map Viewer

Interactive map based reports for land cover, land management, and species of concern.

<http://mtnhp.org/mapviewer/>



Provide user support and tools

MSL helps patrons make the best use of geographic information by providing technical assistance and developing information discovery, access, analysis, and interpretation tools.

Facilitate agency data coordination

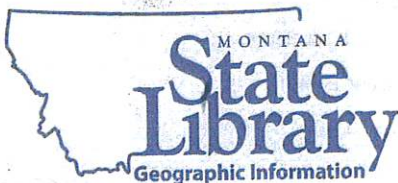
To effectively operate and provide accurate data, MSL promotes interagency coordination, sharing of information, and the development of data standards.

Provide user support and tools

MSL helps patrons make the best use of geographic information by providing technical assistance and developing information discovery, access, analysis, and interpretation tools.

<http://www.msl.mt.gov/fishing/>





Montana State Library
Geographic Information
1515 East 6th Avenue
PO Box 201800
Helena, MT 59620-1800

Local: (406) 444-5354
Toll Free: (800) 338-5087 in MT
Fax: (406) 444-0266
Email: geoinfo@mt.gov
<http://msl.mt.gov/geoinfo>



250 copies of this public document were published at an estimated cost of \$0.604 per copy, for a total cost of \$151.00, which includes \$151.00 for printing and \$0.00 for distribution.